



Clay Table

DESIGN Marc Krusin
Desalto, Italy

More than a table, Clay is a sculpture, a perfect union of beauty and harmonious proportions. The meeting of two volumes achieves a perfect balance of one over the other. The Clay table is visually remarkable feat of engineering in that the round top balances boldly on a fine conical base with ease and rigidity. This critical construction detail was resolved by developing a connection which, despite its small size, does not compromise the stability of the table.

The Clay table takes its name from an applied finish made from a special lava-stone paste applied by hand using a palette knife to achieve the look and feel of natural stone. Bases are now also available in a lacquered Polyurethane or with a cement render. The table tops are available with tops in variety of materials and finishes.

Clay is available with a round or oval top in a variety of sizes and finishes and heights. Certain finishes are also suitable for outdoor use.

LEAD TIME
12 weeks

WARRANTY
3 year structural

CERTIFICATION
100% recyclable
ISO14001, ISO9001
Product Stewardship Programme

RESOURCES AVAILABLE
Drawing file download
Image download
Certification documents

SYDNEY
5/50 Stanley Street
Darlinghurst
+61 2 9358 1155

MELBOURNE
11 Stanley Street
Collingwood
+61 3 9416 4822

ownworld.com.au

Clay Table Collection



CLAY ROUND

Meeting/Dining Table

DIMENSIONS

DIA 1200 H 740 (mm) - Base: DIA 500 (mm)
DIA 1400 H 740 (mm) - Base: DIA 500 (mm)
DIA 1600 H 740 (mm) - Base: DIA 670 (mm)
DIA 1800 H 740 (mm) - Base: DIA 670 (mm)
DIA 2000 H 740 (mm) - Base: DIA 670 (mm)

CODE

Stone/Metal/Marble/
Glass/Ceramic

WEIGHT



CLAY OVAL

Meeting/Dining Table

DIMENSIONS

W 1600 D 1100 H 740 (mm) - Base: DIA 670 D 500 (mm)
W 1800 D 1200 H 740 (mm) - Base: DIA 670 D 500 (mm)
W 2000 D 1200 H 740 (mm) - Base: DIA 670 D 500 (mm)
W 2180 D 1200 H 740 (mm) - Base: DIA 670 D 500 (mm)

CODE

Stone/Metal/Marble/
Glass/Ceramic

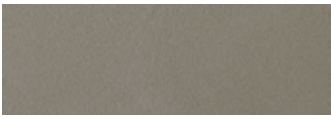
WEIGHT

PRODUCT DATASHEET

Clay Materials & Finishes

- TABLE TOP:** Substrate (where applicable) constructed from 10mm thick MDF, with manually applied concrete or 'lava' stone finish. Tops also available in 6mm ceramic, 8-12mm toughened glass or steel to selected house finish/colour
- TABLE BASE:** Rigid polyurethane base, completely covered in selected house finish.
- GLIDES:** Standard plastic glides.

TABLE TOP



Stone | Concrete
Grey Luna D65



Stone | Concrete
Black D66



Stone
Tofu D64



Stone
Lava D67



Metal
Grey A90



Metal
Rusty A91



Metal
Bronze A92



Marble
Court Grey D62



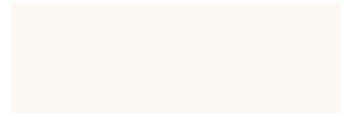
Marble
White Duomo D63



Matt Glass
White E18



Matt Glass
Graphite E40



Glossy Glass
White E97



Ceramic
Cement D85



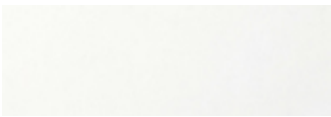
Ceramic
Asphalt D86



Ceramic
Lava D87



Ceramic
Desert D88



Ceramic
White Calce D84



Marble
Etna Natural Rock No4



Marble
Graphite Grey No5



Marble
Calacatta No3

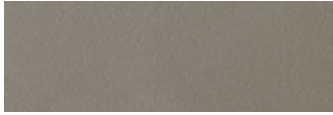
SYDNEY
5/50 Stanley Street
Darlinghurst
+61 2 9358 1155

MELBOURNE
11 Stanley Street
Collingwood
+61 3 9416 4822

ownworld.com.au

Clay Materials & Finishes Cont.

TABLE BASE



Stone | Concrete
Grey Luna D65



Stone | Concrete
Black D66



Stone
Tofu D64



Stone
Lava D67



Metal
Grey A90



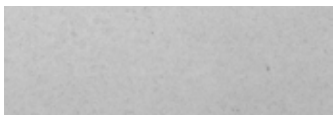
Metal
Rusty A91



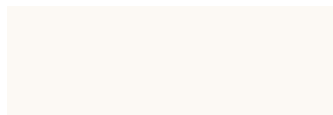
Metal
Bronze A92



Marble
Court Grey D62



Marble
White Duomo D63



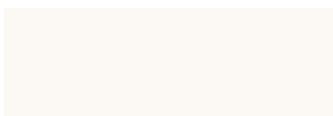
Matt Lacquer
White B62



Matt Lacquer
Graphite B42



Matt Lacquer
Bungee Brown B22



Gloss Lacquer
White F50

Clay Table Family



CLAY ROUND

Meeting/Dining Table



CLAY OVAL

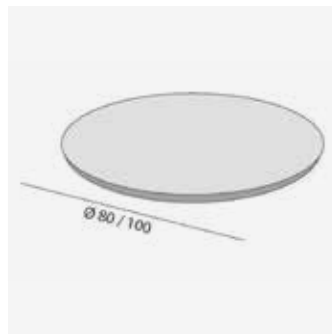
Meeting/Dining Table



CLAY MINI

Occasional Table

Clay Options & Accessories



CLAY LAZY SUSAN

Constructed from 25mm MDF, finished with manually applied stone, metal or marble paste. Rotation is achieved via base support equipped with ball bearings. Available in 80mm DIA (suitable for 160mm and 180mm DIA tables) or 100mm DIA (suitable for 180mm and 200mm DIA tables)

Clay - Examples

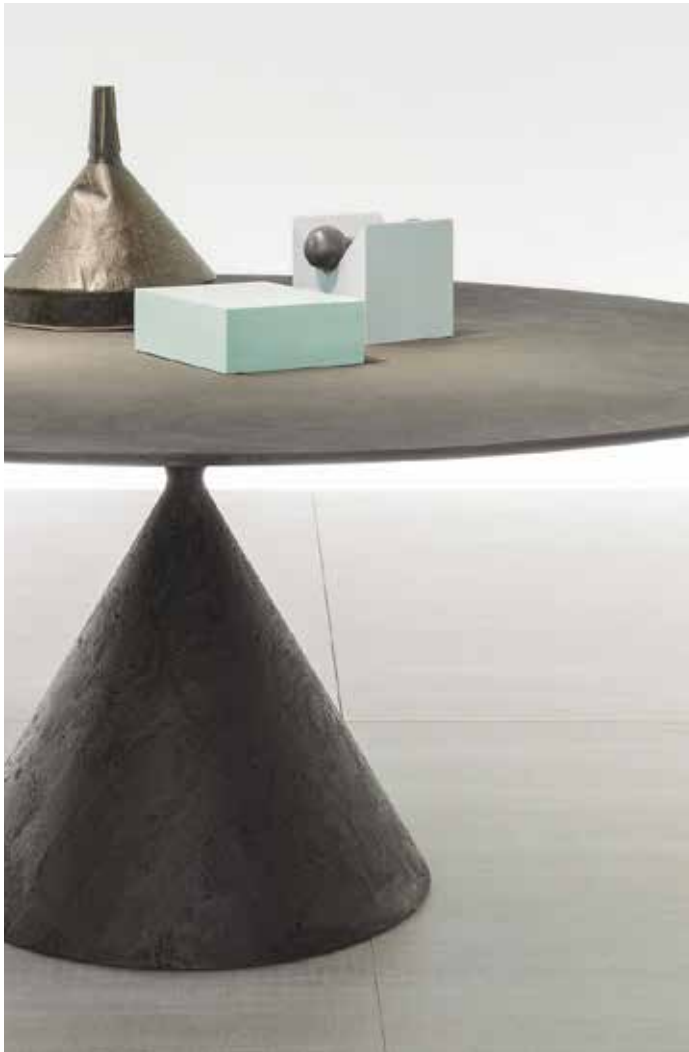


SYDNEY
5/50 Stanley Street
Darlinghurst
+61 2 9358 1155

MELBOURNE
11 Stanley Street
Collingwood
+61 3 9416 4822

ownworld.com.au

Clay - Examples



SYDNEY
5/50 Stanley Street
Darlinghurst
+61 2 9358 1155

MELBOURNE
11 Stanley Street
Collingwood
+61 3 9416 4822

ownworld.com.au