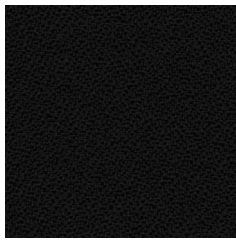
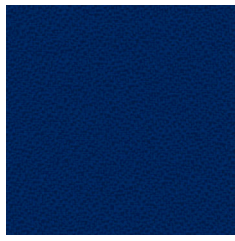


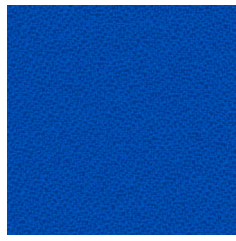
C1 – BOND



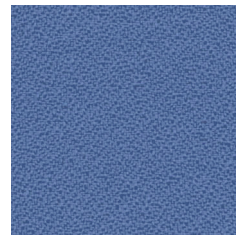
9



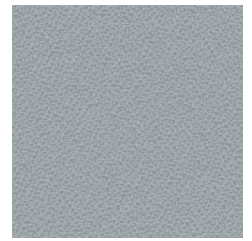
6098



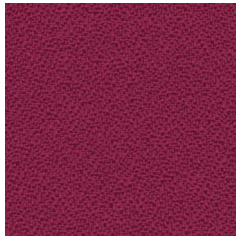
169



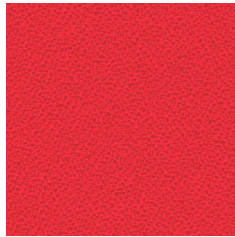
204



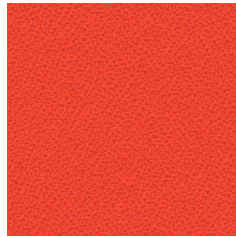
8078



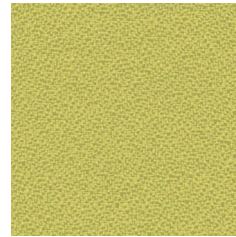
109



79



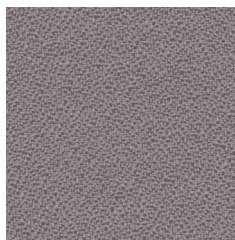
76



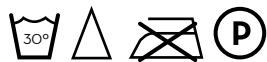
77



5518



81



WIDHT/ ANCHO/ LARGEUR: 140cm
WEIHT/ PESO/ POID: 240gr/m2

Composition:

100% polyolefin.

Light fastness:

6 - 7, EN ISO 105-Bo2.

Abrasion:

40.000 Martindale EN ISO 12947-2.

Resistance to pilling:

4 - 5, EN ISO 12945-2.

Dye fastness to rubbing:

Wet 4 - 5. Dry 4 - 5, EN ISO 105x12.

Flammability:

UNE EN ISO 1021-1 • BS 5852 • DIN 66084
classification P-c • CAL TB 117 section E, part
1 • NFPA 260 cover fabric class 1.

*Batch to catch variations may occur within commercial tolerances.

Composición:

100% poliolefina.

Solidez a la luz:

6 - 7, EN ISO 105-Bo2.

Abrasión:

40.000 Martindale EN ISO 12947-2.

R. a la formación de pilling:

4 - 5, EN ISO 12945-2.

Solidez de las tinturas al frote:

Seco 4 - 5. Mojado 4 - 5, EN ISO 105x12.

Inflamabilidad:

UNE EN ISO 1021-1 • BS 5852 • DIN 66084
classification P-c • CAL TB 117 section E, part
1 • NFPA 260 cover fabric class 1.

*De tintada a tintada se pueden producir variaciones tolerables de color.

Composition:

100% polyoléfine.

Solidité à la lumière:

6 - 7, EN ISO 105-Bo2.

Abrasion:

40.000 Martindale EN ISO 12947-2.

Résistance au pilling:

4 - 5, EN ISO 12945-2.

Résistance au frottement:

Sec 4 - 5. Humide 4 - 5, EN ISO 105x12.

Inflamabilité:

UNE EN ISO 1021-1 • BS 5852 • DIN 66084
classification P-c • CAL TB 117 section E, part
1 • NFPA 260 cover fabric class 1.

*Des variations tolérables de coloris d'un bain à un autre peuvent se manifester.