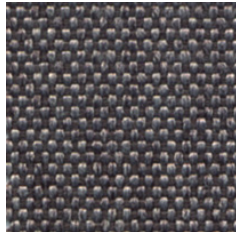


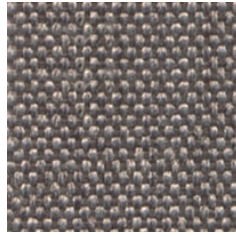
C2 – CORA



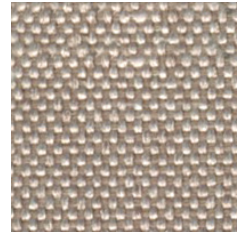
2



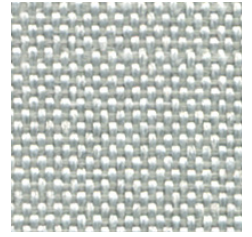
20



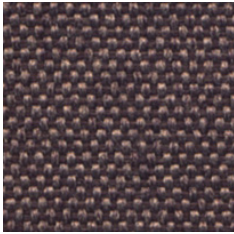
14



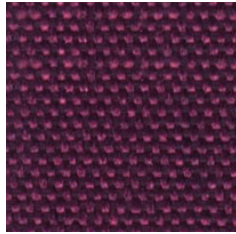
12



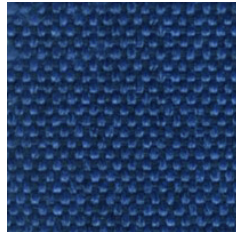
3



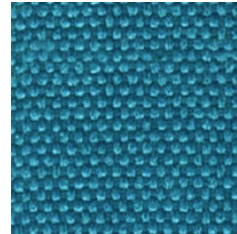
27



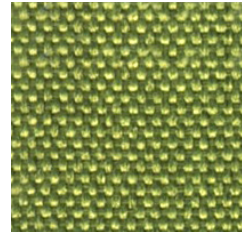
9



18



17



32



WIDHT/ ANCHO/ LARGEUR: 140cm
WEIHT/ PESO/ POID: 350gr/m²

Composition:

100% polyester.

Light fastness:

5 - 6 EN ISO 105-B02.

Abrasion:

100.000 Martindale EN ISO 12947-2.

Resistance to pilling:

4 - 5, EN ISO 12945-2.

Dye fastness to rubbing:

Wet 4 - 5. Dry 4 - 5, EN ISO 105x12.

Environment:

Oeko-Tex.

*Batch to batch variations may occur within commercial tolerances.

Composición:

100% poliéster.

Solidez a la luz:

5 - 6 EN ISO 105-B02.

Abrasión:

100.000 Martindale EN ISO 12947-2.

R. a la formación de pilling:

4 - 5, EN ISO 12945-2.

Solidez de las tinturas al frote:

Seco 4 - 5. Mojado 4 - 5, EN ISO 105x12.

Medio ambiente:

Oeko-Tex.

*De tintada a tintada se pueden producir variaciones tolerables de color.

Composition:

100% polyester.

Solidité à la lumière:

5 - 6 EN ISO 105-B02.

Abrasion:

100.000 Martindale EN ISO 12947-2.

Résistance au pilling:

4 - 5, EN ISO 12945-2.

Résistance au frottement:

Sec 4 - 5. Humide 4 - 5, EN ISO 105x12.

Environnement:

Oeko-Tex.

*Des variations tolérables de coloris d'un bain à un autre peuvent se manifester.



Anti stain

