

# C2 – ORUM



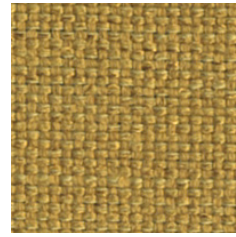
10



4



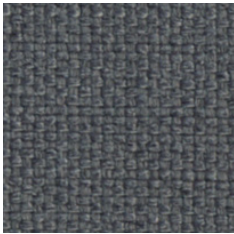
8



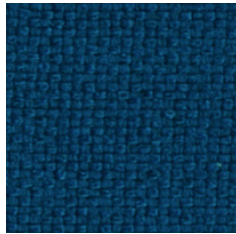
11



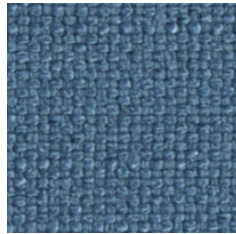
19



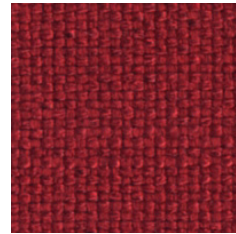
1



7



13



14



WIDHT/ ANCHO/ LARGEUR: 140cm  
WEIHT/ PESO/ POID: 450gr/m<sup>2</sup>

**Composition:**

100% polyester.

**Light fastness:**

4 - 5 EN ISO 105-B02.

**Abrasion:**

35.000 Martindale EN ISO 12947-2.

**Resistance to pilling:**

4 - 5, EN ISO 12945-2.

**Dye fastness to rubbing:**

Wet 4 - 5. Dry 4 - 5, EN ISO 105x12.

\*Batch to batch variations may occur within commercial tolerances.

**Composición:**

100% poliéster.

**Solidez a la luz:**

4 - 5 EN ISO 105-B02.

**Abrasión:**

35.000 Martindale EN ISO 12947-2.

**R. a la formación de pilling:**

4 - 5, EN ISO 12945-2.

**Solidez de las tinturas al frote:**

Seco 4 - 5. Mojado 4 - 5, EN ISO 105x12.

\*De tintada a tintada se pueden producir variaciones tolerables de color.

**Composition:**

100% polyester.

**Solidité à la lumière:**

4 - 5 EN ISO 105-B02.

**Abrasion:**

35.000 Martindale EN ISO 12947-2.

**Résistance au pilling:**

4 - 5, EN ISO 12945-2.

**Résistance au frottement:**

Sec 4 - 5. Humide 4 - 5, EN ISO 105x12.

\*Des variations tolérables de coloris d'un bain à un autre peuvent se manifester.



Anti stain

