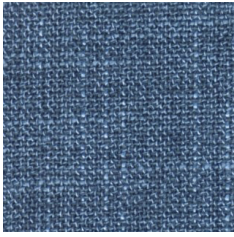


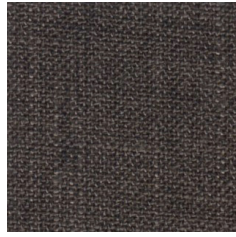
C2 – STEVE/WEST



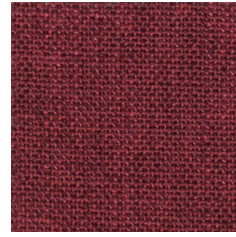
WEST 16



WEST 1



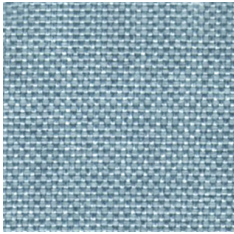
WEST 12



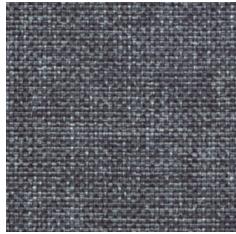
WEST 14



WEST 19



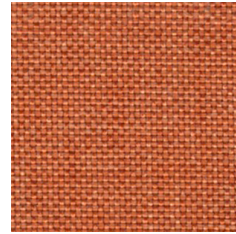
STEVE 27



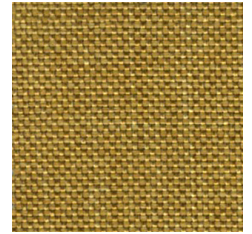
STEVE 18



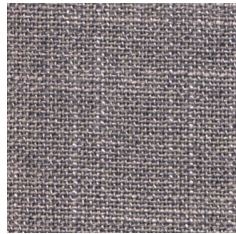
STEVE 13



STEVE 24



STEVE 23



WEST 4



WEST 7



WIDHT/ ANCHO/ LARGEUR: 140cm

WEIHT/ PESO/ POID: Steve 215gr/m2. West 248gr/m2

Composition:

Steve 100% polyester.

West 75% polyester, 30% cotton.

Light fastness:

5, EN ISO 105-Bo2.

Abrasion:

Steve 25.000 Martindale EN ISO 12947-2.

West 40.000 Martindale EN ISO 12947-2.

Resistance to pilling:

4 - 5, EN ISO 12945-2.

Dye fastness to rubbing:

Steve Wet 4 - 5. Dry 4 - 5, EN ISO 105x12.

West Wet 5. Dry 5, EN ISO 105x12.

Environment:

Oeko-Tex.

*Batch to catch variations may occur within commercial tolerances.

Composición:

Steve 100% poliéster.

West 75% poliéster, 30% algodón.

Solidez a la luz:

5, EN ISO 105-Bo2.

Abrasion:

Steve 25.000 Martindale EN ISO 12947-2.

West 40.000 Martindale EN ISO 12947-2.

R. a la formación de pilling:

4 - 5, EN ISO 12945-2.

Solidez de las tinturas al frote:

Steve Seco 4 - 5. Mojado 4 - 5, EN ISO 105x12.

West Seco 5. Mojado 5, EN ISO 105x12.

Medio ambiente:

Oeko-Tex.

*De tintada a tintada se pueden producir variaciones tolerables de color.

Composición:

Steve 100% polyester.

West 75% polyester, 30% cotton.

Solidité à la lumière:

5, EN ISO 105-Bo2.

Abrasion:

Steve 25.000 Martindale EN ISO 12947-2.

West 40.000 Martindale EN ISO 12947-2.

Résistance au pilling:

4 - 5, EN ISO 12945-2.

Résistance au frottement:

Steve Sec 4 - 5. Humide 4 - 5, EN ISO 105x12.

West Sec 5. Humide 5, EN ISO 105x12.

Environnement:

Oeko-Tex.

*Des variations tolérables de coloris d'un bain à un autre peuvent se manifester.



Anti stain

