



SRD630



SRD320



SRD960



SRD480



SRD120



SRD190



(E)

SRD210



SRD780

SIRDAL

GUDBRANDSDALENS
ULDVAREFABRIK

Seat. Backrest.

Sirdal is part of the 100% Norwegian wool trio Sirdal, Suldal and Setesdal. These fabrics are uniquely short-travelled in every part of the process – 100% pure Norwegian wool manufactured in Norway. Norwegian wool with its distinctive brilliance, resilience and durability is expressed through rich structures that evoke authenticity paired with chic and modern comfort.

Composition: 100% Virgin
Norwegian wool

Abrasion resistance: 57 000
Martindale (EN ISO 12947-2)

Flammability: BS EN 1021: 1-2
(Cigarette & match), IMO FTP
code 2010: Part 8

Light fastness: 5-7
(EN ISO 105-B02)

Rubbing fastness: 4/4-5 (Wet/Dry)
(EN ISO 105X12)

Pilling: 3-4 (EN ISO 12945-2)

Environmental facts: Locally
produced, 100% free of heavy
metals, ISO 14001 certified
company

Design: GU Design team/Ragnhild
Nordhagen, Flokk Design team/
Pernille Stoltze

Produced in: Norway

Cleaning: Professional dry
cleaning (For further info follow
GU's cleaning guidelines –
www.gu.no)



(E)

CU61257



(E)

CU62083



(E)

CU68261



(E)

CU61258



(E)

CU60112



CU60999



CU66165

CURA

GABRIEL

Seat. Backrest.

Cura is a two-coloured fabric made from 98% post-consumer recycled polyester. It has a matt, slightly irregular and natural-looking texture where the dark, underlying grey fibers create a discreet yet vibrant melange effect. High durability and stretchability and its soft, voluminous touch make Cura suitable for both office and lounge furniture.

Composition: 98% post-consumer recycled polyester, 2% polyester

Abrasion resistance: 100 000
Martindale (EN ISO 12947-2)

Flammability: BS EN 1021: 1–2,
BS 5852 0&1, CA TB 117-2013,
ASTM E 84 Class I

Light fastness: 5-8
(EN ISO 105 - B02)

Rubbing fastness: 4-5/4-5
(Wet/Dry) (EN ISO 105X12)

Pilling: 4-5 (EN ISO 12945-2)

Environmental facts: EU Ecolabel,
Oeko-Tex® Standard 100, Con-
tains no Flame Retardant chemi-
cals, ISO 14001 certified company

Design: Cenk Kivrikoglu

Produced in: Lithuania

Cleaning: Wash or dry cleaning,
Can be disinfected with ethanol
and is bleach-cleanable (For fur-
ther info follow Gabriel's cleaning
guidelines – www.gabriel.dk)



(E) SIS805



(E) SIS405



(E) SIS165

Sisu is a chequered woolen textile designed by the celebrated designer Nanna Ditzel, which links to the iconic textile Hallingdal created in 1965. The expression of Sisu is reminiscent of looking at Hallingdal through a magnifying glass. The textile is woven with thick, voluminous woollen yarns and features a bold yet subtle, checked pattern. Blocks of colour play across its surface, rising to tactile, rhythmic effect.

Composition: 91% new Norwegian wool 8% new New Zealand wool 1% polyamide

Abrasion resistance: 70 000 Martindale (EN ISO 12947-2)

Flammability: BS EN 1021: 1-2 (Cigarette & match), AS/NZS 3837 Class 2, BS 5852 part 1, CA TB 117-2013, IMO FTP Code 2010 Part 8, BS 5852 Crib 5 with treatment, NF D 60 013, UNI 9175 1IM.

Light fastness: 7 (EN ISO 105-B02)

Rubbing fastness: 4-5/4-5 (Wet/Dry) (EN ISO 105X12)

Pilling: 3-4 (EN ISO 12945-2:2020)

Environmental facts: 100% free of heavy metals, ISO 14001 certified company, Greenguard Gold

Design: Nanna Ditzel, curated by artist Danh Vo.

Produced in: Norway

Cleaning: Professional dry cleaning with tetrachloroethylene, normal process (For further info follow Kvadrat's cleaning guidelines – www.kvadrat.dk)



(E)

FCM60309

Focus Melange is a woven felt fabric made of 100% long-staple worsted wool. It has an ultra soft and satiny touch combined with high strength obtained by use of high-quality worsted wool yarn and careful production processes. In addition to high durability, the fabric does not pill and will remain attractive over time regardless of wear and tear. The equal thickness between the warp and weft yarn give a harmonious and symmetric melange colour expression.

Composition: 100% New Zealand wool

Abrasion resistance: 100 000 Martindale (EN ISO 12947-2)

Flammability: BS EN 1021: 1-2 (Cigarette & match), BS 5852 Part 1 0.1 Cigarette and match, CA TB 117-2013, Class Uno UNI 9175 Class 1 I EMME, ÖNORM A33800-B1-B33825-Q1UK

Light fastness: 5-7 (EN ISO 105-B02)

Rubbing fastness: 4-5/4-5 (Wet/Dry) (EN ISO 105X12)

Pilling: 4 (EN ISO 12945-2)

Environmental facts: EU Ecolabel, 100% free of heavy metals and harmful chemicals, biodegradable, Oeko-Tex® Standard 100, ISO 14001 certified company

Design: Inger Mosholt Nielsen, colours Cenk Kivrikoglu

Produced in: Lithuania

Cleaning: Professional dry cleaning (For further info follow Gabriel’s cleaning guidelines – www.gabriel.dk)

MAINLINE FLAX

CAMIRA

Seat. Backrest.



(E)

MLF12

Mainline Flax is the natural progression of our all time favourite Main Line Plus fabric, building on our industry leading bast fibre expertise to create a new inherently flame retardant fabric from sustainable sources. A symbol of purity, wild flax has been used in textiles for thousands of years thanks to its strong, long and smooth fibres found inside the stem of the plant. The fibre is spun into a 75/25 wool flax blend, then fibre dyed to create beautiful mixture yarns which are woven into interesting solids and cross-colours inspired by the rich tones of rare jewels.

Composition: 75% Virgin Wool, 25% Flax

Abrasion resistance: > 50 000 Martindale (EN ISO 12947-2)

Flammability: BS EN 1021: 1–2 (Cigarette & match), BS 7176 Low & Medium Hazard, BS 5852 Crib 5, CA TB 117-2013, IMO FTP Code (Part 8), UNI 9175 Classe 1 IM

Light fastness: 5 (EN ISO 105-B02)

Rubbing fastness: 3/4 (Wet/Dry) (EN ISO 105X12)

Pilling: 4 (EN ISO 12945-2)

Environmental facts: EU Ecolabel, Indoor Advantage™ "Gold", 100% free of heavy metals, ISO 14001 certified company, Rapidly renewable and compostable

Design: Camira Design Studio

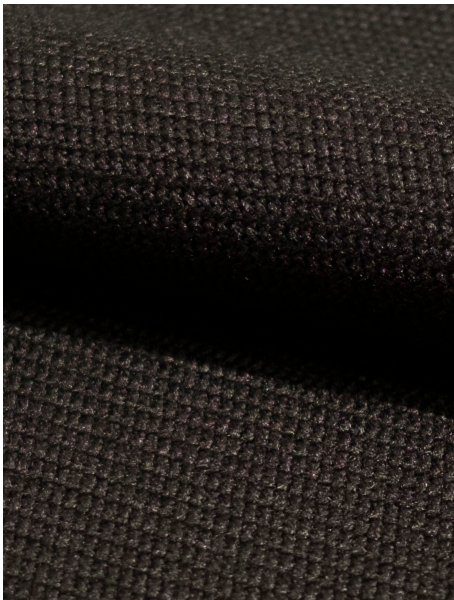
Produced in: United Kingdom

Cleaning: Professional dry cleaning (For further info follow Camira's cleaning guidelines – www.camirafabrics.com)

OCEANIC

CAMIRA

Seat. Backrest.



(E)

OCI001

Oceanic is made from 100% post-consumer recycled polyester yarn where 90% are created from post-consumer plastic bottles diverted from landfill and 10% is up-cycled marine plastic (from marine litter). It is a fabric born out of the SEAQUAL Initiative designed to combat marine plastic pollution and achieve a waste free environment. Oceanic has a two coloured diagonal structure with a matte surface and soft touch.

Composition: 100% post-consumer recycled polyester, including 50% SEAQUAL yarn

Abrasion resistance: >100 000 Martindale (EN ISO 12947-2)

Flammability: BS EN 1021: 1–2 (Cigarette & match), BS 7176 Low, BS 7176 Medium Hazard with EnviroFlam5, CA TB 117-2013

Light fastness: 5 (EN ISO 105 - B02: 2013)

Rubbing fastness: 4/4 (Wet/Dry) (EN ISO 105X12)

Pilling: 4 (EN ISO 12945-2)

Environmental facts: Oeko-Tex® Standard 100, Indoor Advantage™ "Gold", non metallic dyestuffs, ISO 14001 certified company.

Design: Camira Design Studio

Produced in: United Kingdom

Cleaning & disinfection: Washable at 60 °C and bleach cleanable (For further info follow Camira's cleaning guidelines – www.camirafabrics.com)