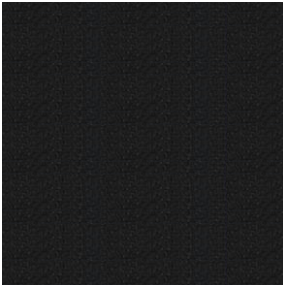


FABRIC FUSION RANGE

MATERIAL: 100% Polyester, Rated Heavy Commercial Use



Jet



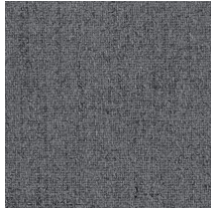
Flame

FABRIC HAWTHORN RANGE

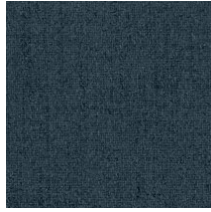
MATERIAL: 100% Polyester, Rated Heavy Commercial Use



Blush



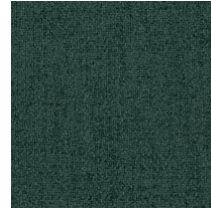
Charcoal



Denim



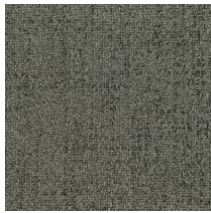
Earth



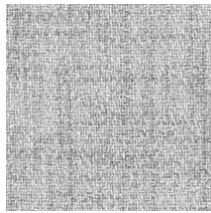
Forest



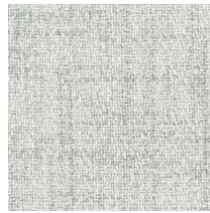
Manuka



Mink



Mist



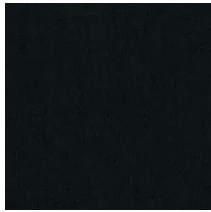
Natural



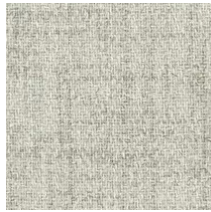
Navy



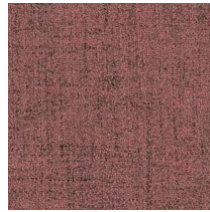
Olive



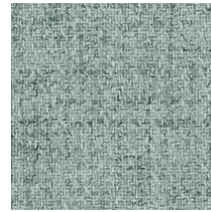
Onyx



Pumice



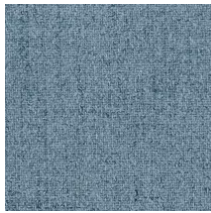
Rosewood



Seafoam



Silver



Sky

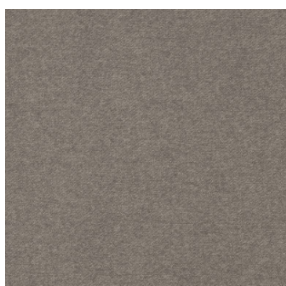


Taupe

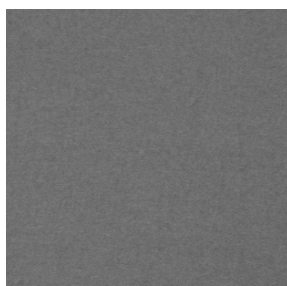
Colours may vary due to printing processes and computer screen variations. Please always check actual samples for confirmation.
Due to constant innovation, Advanta products may be subject to design and specification changes without notice. Copyright © Advanta 2022

FABRIC DOLLY RANGE

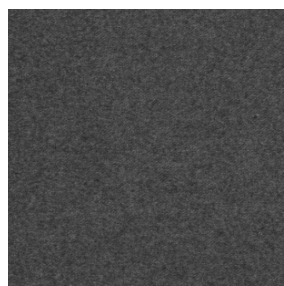
MATERIAL: 100% Polyester, Rated Heavy Commercial Use



Ash



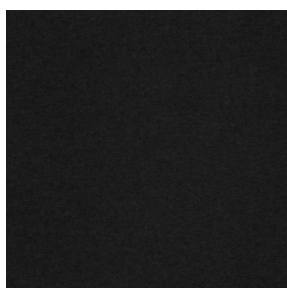
Cement



Charcoal



Denim



Ebony



Flame

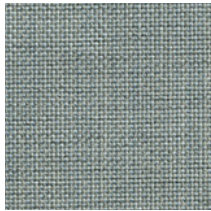


Peacock

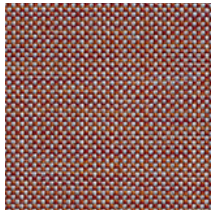
Colours may vary due to printing processes and computer screen variations. Please always check actual samples for confirmation.
Due to constant innovation, Advanta products may be subject to design and specification changes without notice. Copyright © Advanta 2022

FABRIC PICCOLO RANGE

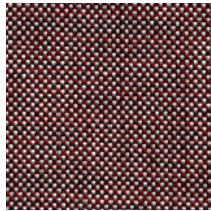
MATERIAL: 100% Polyester, Rated Heavy Commercial Use



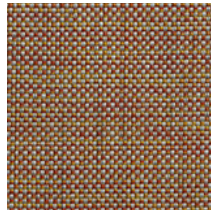
Iced



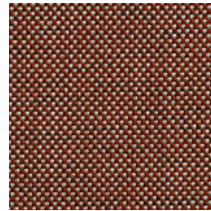
Hot



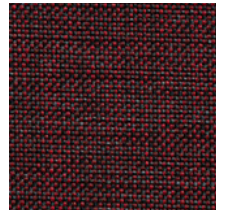
Misto



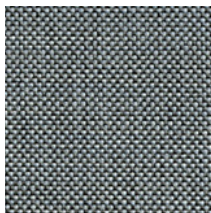
Rio



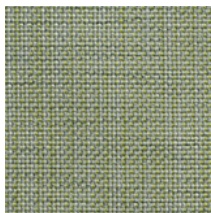
Tamper



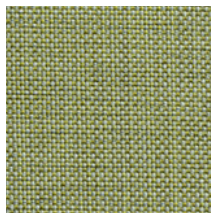
Romano



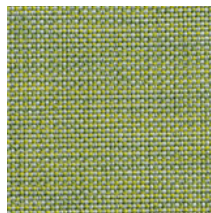
Roast



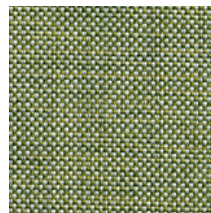
Irish



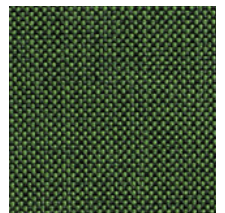
Raf



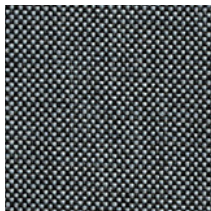
Peaberry



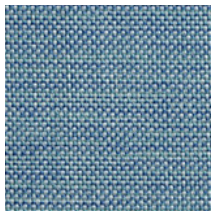
Cuppa



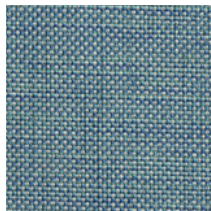
Aroma



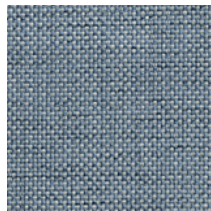
Joe



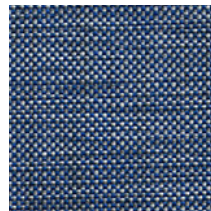
Barista



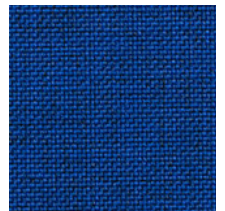
Hopper



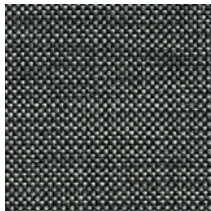
Brewer



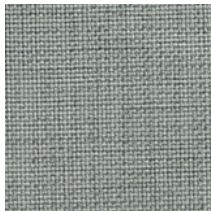
Porta



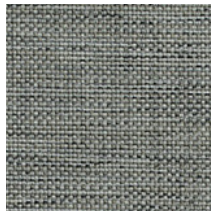
Pod



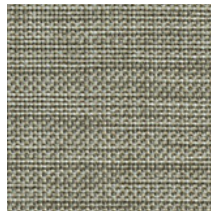
Beans



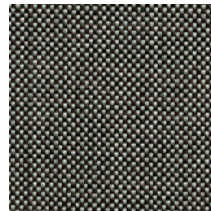
Frappe



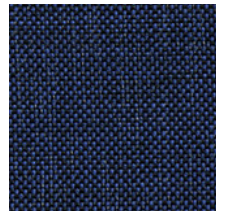
Soy



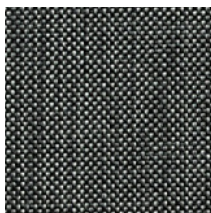
Chai



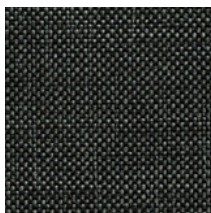
Mocha



Filter



Mac



Arabica



Americano

Colours may vary due to printing processes and computer screen variations. Please always check actual samples for confirmation.
Due to constant innovation, Advanta products may be subject to design and specification changes without notice. Copyright © Advanta 2022

FABRIC AUGUSTUS RANGE

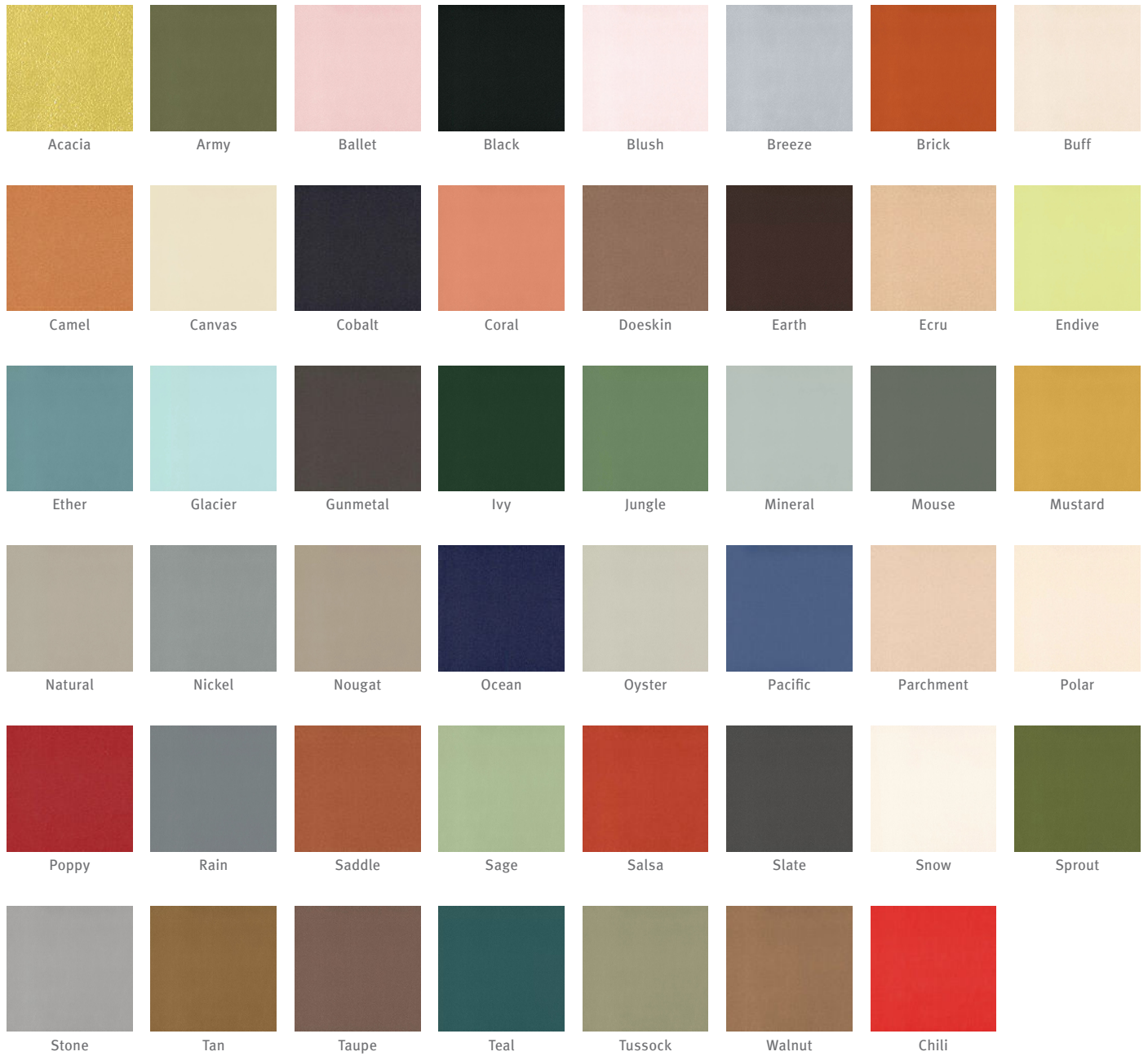
MATERIAL: 70% Wool 25% Polyamide 5% Acrylic, Rated Heavy Commercial Use



Colours may vary due to printing processes and computer screen variations. Please always check actual samples for confirmation.
Due to constant innovation, Advanta products may be subject to design and specification changes without notice. Copyright © Advanta 2022

VINYL LUSTRELL CHARISMA RANGE

MATERIAL: 82% PVC 18% POLYESTER, Rated Heavy Commercial Use



Colours may vary due to printing processes and computer screen variations. Please always check actual samples for confirmation.
Due to constant innovation, Advanta products may be subject to design and specification changes without notice. Copyright © Advanta 2022