

# Functions

## Seat Height



Adjust the chair height, within a range of 5 1/8" (130mm), by pulling the lever under the seat on the right.

## Seat Depth



Adjust the seat depth within a range of 2" (50mm) by operating the lever on the left-hand side of the seat.

## 3D Adjustable Armrest



The arms of the chair can be adjusted in three dimensions. By pressing the button under the arm pad, the arm height can be adjusted in a range of 4" (100mm). The depth and angle of arm pads can be adjusted within a range of 2" (50mm), at an angle of up to 20° respectively.

## Reclining Tension



The dial under the seat on the right side adjusts the reclining tension.

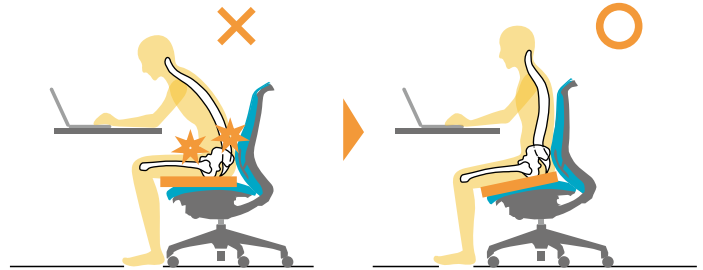
## Recline & Lock

The synchro-tilt mechanism moves the backrest and seat simultaneously. A dial under the seat allows the backrest to be set to move freely or be locked in one of the four positions:

1. Forward-tilt (10 degrees)
2. Upright
3. Backward-recline position
4. Deepest backward-recline position (23 degrees)



## Benefits of Forward-tilt Function

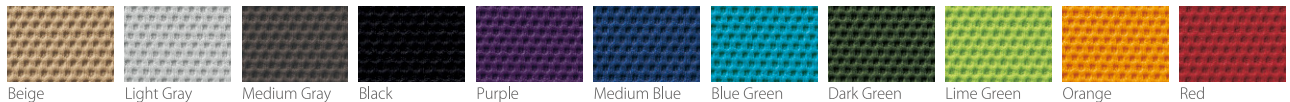


When hunching forward for a prolonged time period, the body experiences undesirable pressure on the abdomen and the lower back. Forward-tilt function helps to reduce the stress on your body by maintaining the natural s-curve of the spine for better posture.

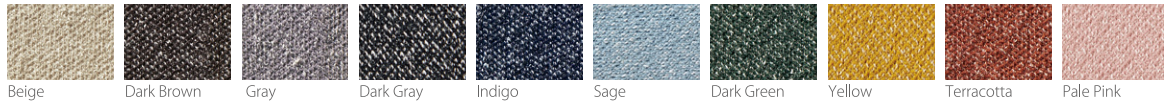
## Color Options

### Upholstered Backrest

#### Plain

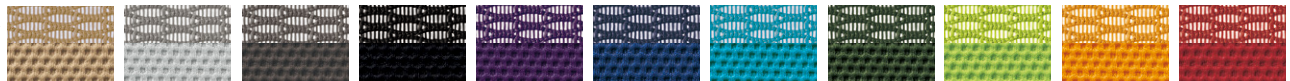


#### Interlock



### Mesh Backrest

Back



Seat



# Line Up

## Backrest Types



Mesh

Upholstered

## Backrest Options



High Back with Headrest



High Back



Low Back

## Color Options for Body and Leg



White / Polished



Black / Polished



Black / Black Plastic

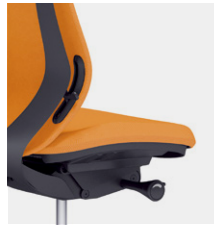
## Armrest Types



3D Adjustable Armrest



Fixed Armrest



Without Armrest

## Options



Adjustable Hanger



Adjustable Headrest



Fixed Headrest



Lumbar Support  
(For Mesh Type only)