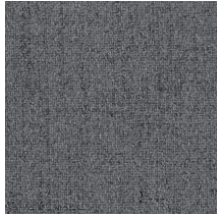


FABRIC HAWTHORN RANGE

MATERIAL: 100% Polyester, Rated Heavy Commercial Use



Blush



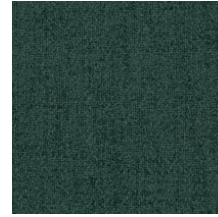
Charcoal



Denim



Earth



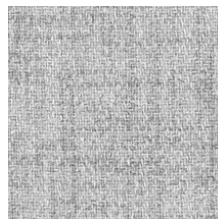
Forest



Manuka



Mink



Mist



Natural



Navy



Olive



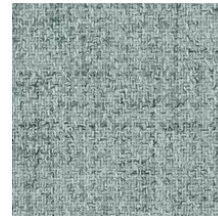
Onyx



Pumice



Rosewood



Seafoam



Silver



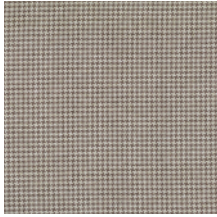
Sky



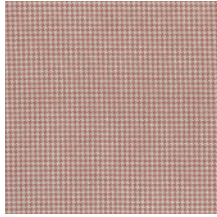
Taupe

FABRIC BEDFORD RANGE

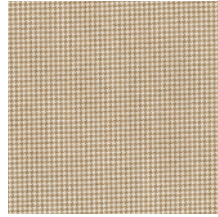
MATERIAL: 100% Polyester, Rated Heavy Commercial Use



Biscuit



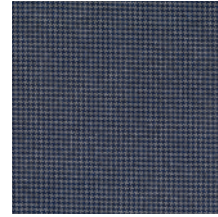
Blossum



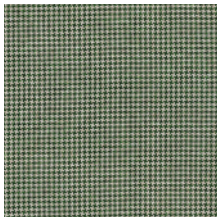
Honey



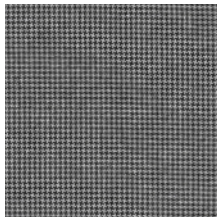
Ivory



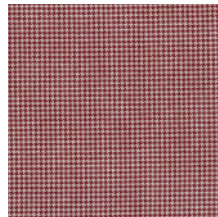
Navy



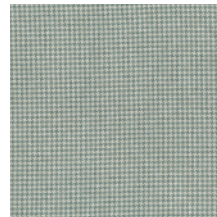
Olive



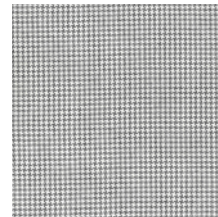
Onyx



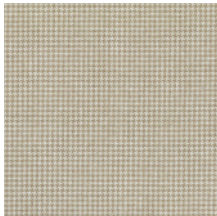
Rouge



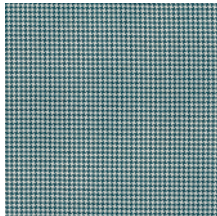
Seafoam



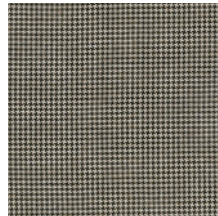
Silver



Stone



Teal



Walnut

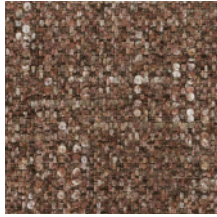
Colours may vary due to printing processes and computer screen variations. Please always check actual samples for confirmation.
Due to constant innovation, Advanta products may be subject to design and specification changes without notice. Copyright © Advanta 2025

FABRIC HUDSON RANGE

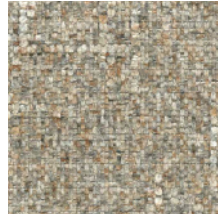
MATERIAL: 100% Recycled Polyester, Rated Heavy Commercial Use



Carnival



Copper Blush



Dijon



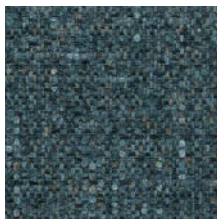
Frost



Green Tea



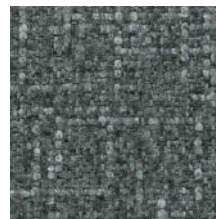
Heather



Indigo



Jewel



Mercury



Mineral

Colours may vary due to printing processes and computer screen variations. Please always check actual samples for confirmation.
Due to constant innovation, Advanta products may be subject to design and specification changes without notice. Copyright © Advanta 2025

VINYL LUSTRELL CHARISMA RANGE

MATERIAL: 82% PVC 18% POLYESTER, Rated Heavy Commercial Use



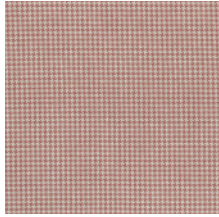
Colours may vary due to printing processes and computer screen variations. Please always check actual samples for confirmation.
Due to constant innovation, Advanta products may be subject to design and specification changes without notice. Copyright © Advanta 2025

FABRIC BEDFORD RANGE

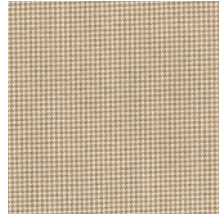
MATERIAL: 100% Polyester, Rated Heavy Commercial Use



Biscuit



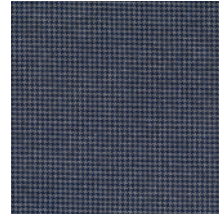
Blossum



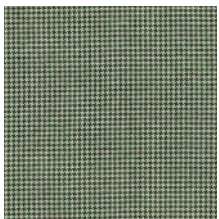
Honey



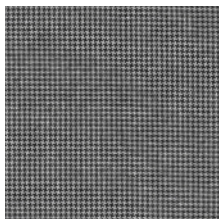
Ivory



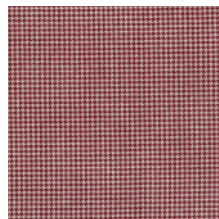
Navy



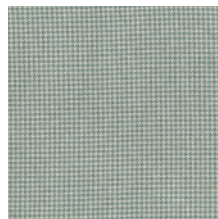
Olive



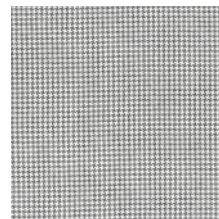
Onyx



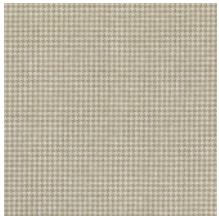
Rouge



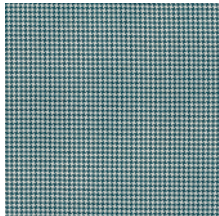
Seafoam



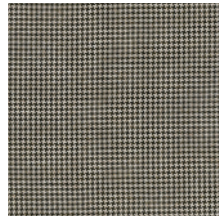
Silver



Stone



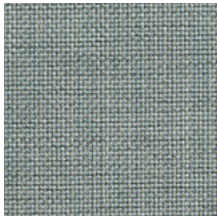
Teal



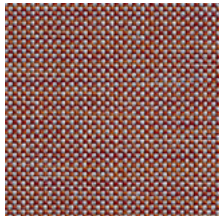
Walnut

FABRIC PICCOLO RANGE

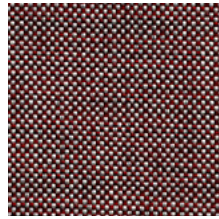
MATERIAL: 100% Polyester, Rated Heavy Commercial Use



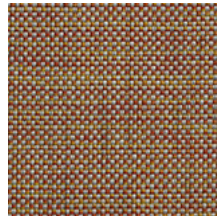
Iced



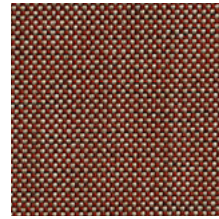
Hot



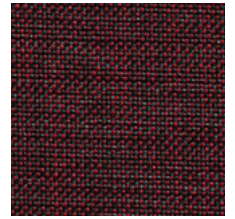
Misto



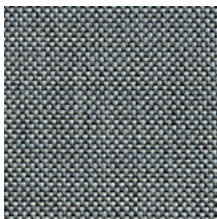
Rio



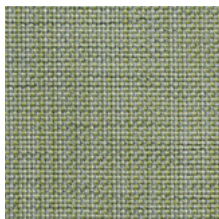
Tamper



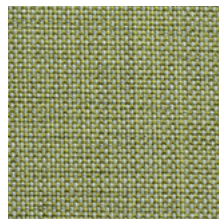
Romano



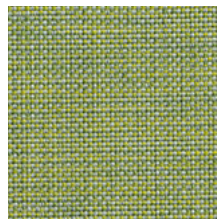
Roast



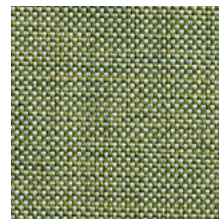
Irish



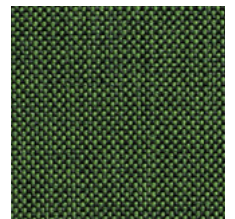
Raf



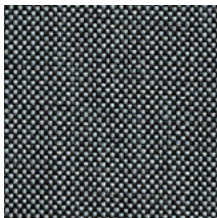
Peaberry



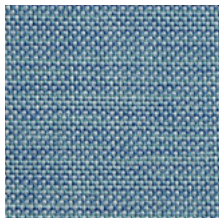
Cuppa



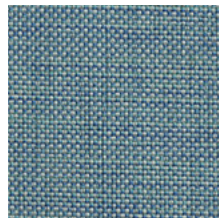
Aroma



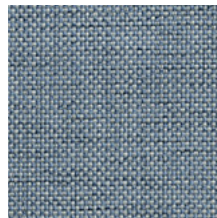
Joe



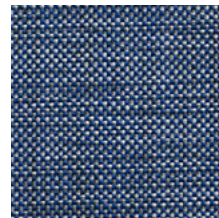
Barista



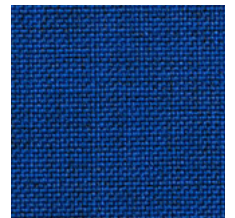
Hopper



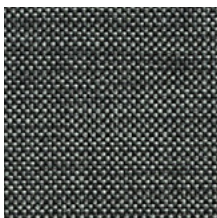
Brewer



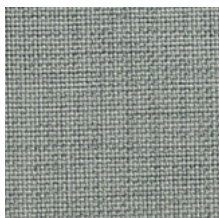
Porta



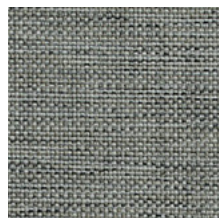
Pod



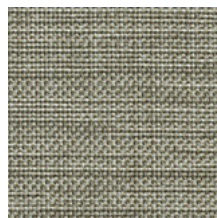
Beans



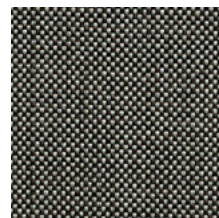
Frappe



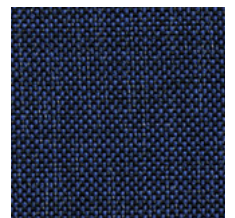
Soy



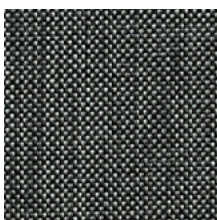
Chai



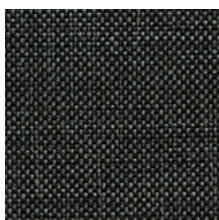
Mocha



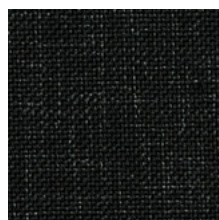
Filter



Mac



Arabica

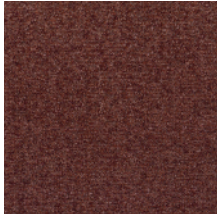


Americano

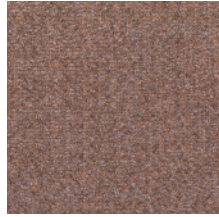
Colours may vary due to printing processes and computer screen variations. Please always check actual samples for confirmation. Due to constant innovation, Advanta products may be subject to design and specification changes without notice. Copyright © Advanta 2025

FABRIC BABYLON RANGE

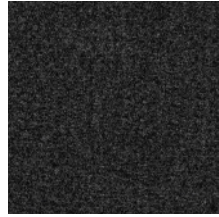
MATERIAL: 61% Acrylic 3% Polyester 36% Recycled Olefin, Rated Heavy Commercial Use



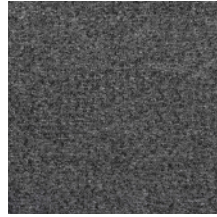
Berry



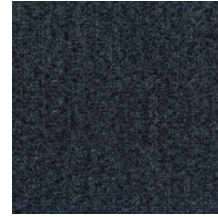
Blush



Coal



Grey



Ink



Ivory



Linen



Moss



Ocean



Pickle



Seaglass



Silver



Taupe



Terra



Wheat

Colours may vary due to printing processes and computer screen variations. Please always check actual samples for confirmation.
Due to constant innovation, Advanta products may be subject to design and specification changes without notice. Copyright © Advanta 2025