



Takimi

DESIGN LC STUDIO
LACIVIDINA, ITALY

Versatility is the signature feature of the Takimi Modular lounge collection, inspired by Lego bricks. There are 17 individual modular elements available which differ in shape and size to enable countless configurations and extreme adaptability to every situation. Takimi is available to suit any client requirements from the most traditional sofa to the most complex modular seating.

laCividina

PRICING

\$1710 — \$4375 Trade pricing ex GST
Min = entry level, max = premium finishes

Contact us for volume pricing

LEADTIME

12-14 Weeks

WARRANTY

3 Year Structural

CERTIFICATION

ISO 9001/UNI EN ISO 9001:2015
CATAS Member
FSC Certification
Product Stewardship Programme

SYDNEY
5/50 Stanley Street
Darlinghurst

+61 29358 1155

MELBOURNE
11 Stanley Street
Collingwood

+61 39417 0781

ownworld.com.au

DIMENSIONS

[Click to download](#)

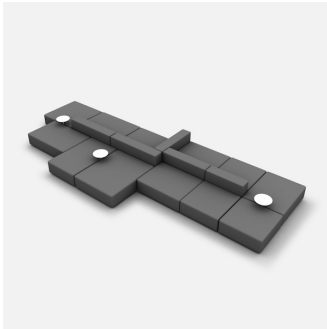
MATERIALS

Structure: Frame Constructed from solid Beech wood, with Masonite panels

Upholstery: Fire retardant polyurethane foam, extra cushion with feather padding, removable fabric covers/fixed leather covers, fully upholstered in house fabric/leather or COM/COL

Feet: Small Polypropylene Feet

COLLECTION



Takimi
OTTOMAN
LACIVIDINA



Takimi
MODULAR LOUNGE
LACIVIDINA

SYDNEY
5/50 Stanley Street
Darlinghurst

+61293581155

MELBOURNE
11 Stanley Street
Collingwood

+61394170781

ownworld.com.au